

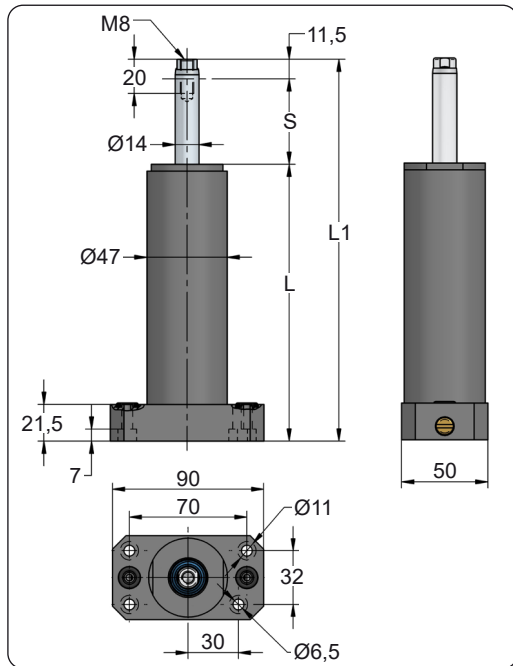
## HYDRAULIC EJECTORS

- Double effect Hydraulic Ejectors
- Suitable for hot stamping
- HSE standard size
- HSCE compact size
- Anti-ejection device
- Non-rotating device

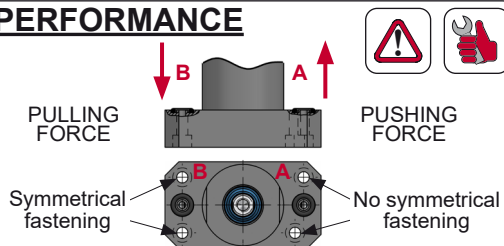


**HSE**




Hydraulic Ejector

**AZOL  
GAS**

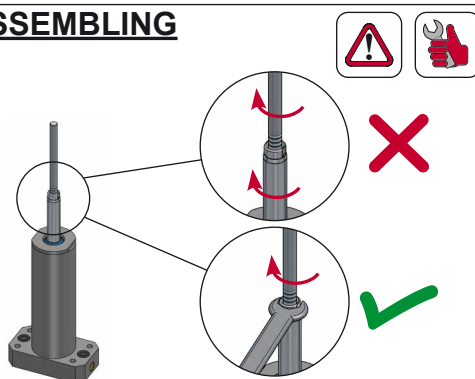
| ORDER                | S<br>(mm) | L1<br>$\pm 0,25$<br>(mm) | L<br>(mm) |
|----------------------|-----------|--------------------------|-----------|
| <b>HSE 15-30 025</b> | 25        | 173.5                    | 137       |
| <b>HSE 15-30 050</b> | 50        | 223.5                    | 162       |
| <b>HSE 15-30 075</b> | 75        | 273.5                    | 187       |
| <b>HSE 15-30 100</b> | 100       | 323.5                    | 212       |
| <b>HSE 15-30 125</b> | 125       | 373.5                    | 237       |
| <b>HSE 15-30 150</b> | 150       | 423.5                    | 262       |
| <b>HSE 15-30 175</b> | 175       | 473.5                    | 287       |
| <b>HSE 15-30 200</b> | 200       | 523.5                    | 312       |
| <b>HSE 15-30 225</b> | 225       | 573.5                    | 337       |
| <b>HSE 15-30 250</b> | 250       | 623.5                    | 362       |

**PERFORMANCE**

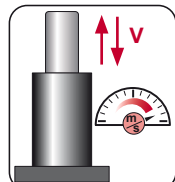
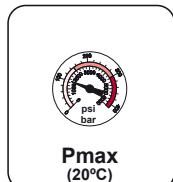
**WARNING:** no symmetrical fastening (A) corresponds to pushing force and symmetrical fastening (B) corresponds to pulling force.

|  |  |  |
|--|---|---|
| Pmax<br>(bar)  | Pmax<br>(psi)   | Pushing<br>Force (N)  |
| 100  | 1450  | 4909  |
|  |   | Pulling<br>Force (N)  |
|  |   | 3369  |

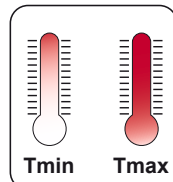
| ENG ORDER   | DEU BESTELL | FRA COMMANDE | ITA ORDINE | ESP PEDIDO | POR PEDIDO |
|---|-------------|--------------|------------|------------|------------|
|  |             |              |            |            |            |
| <b>HSE 15-30</b>  |             |              |            |            |            |
| <b>HSE 15-30 050</b>  |             |              |            |            |            |

**ASSEMBLING**

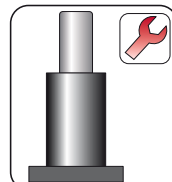
**WARNING:** when threading ejector rods to the HSE hydraulic ejector, the HSE piston rod must be well fastened as shown to prevent its rotation.

**OIL****Vmax 0,5 m/s**

bar    psi  
100    1450



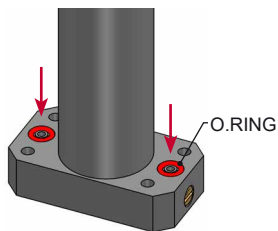
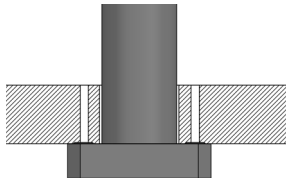
°C    °F    °C    °F  
0    32    80    176

**NO REPAIR**

## CONNECTION



### 1 SUPERIOR



**WARNING:** Only one type of connection (superior) is available.

Use the o.rings supplied with HSE to connect the hydraulic ejector HSE to the plate.

## HOW TO ORDER

|            |              |
|------------|--------------|
|            | ENG ORDER    |
|            | DEU BESTELL  |
|            | FRA COMMANDE |
|            | ITA ORDINE   |
|            | ESP PEDIDO   |
| POR PEDIDO |              |

**HSE 15-30**

**50** mm

**HSE 15-30 050**

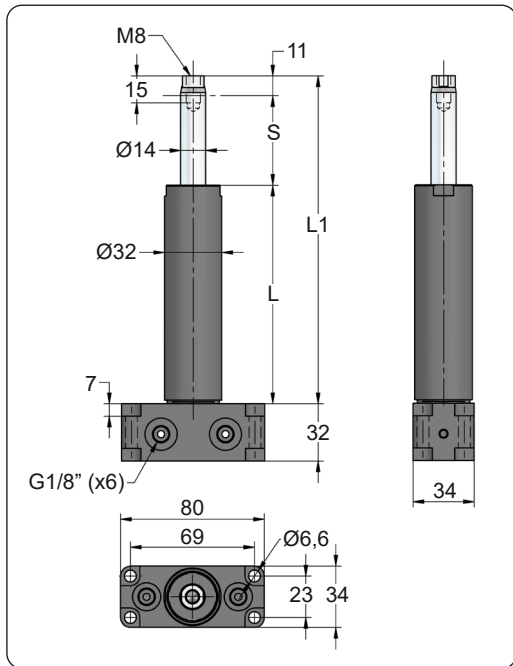


**WARNING:**

Due to only one type of connection (superior) is available, HSE hydraulic ejector is supplied with the corresponding o.rings (on separate bag fitted to the cylinder).

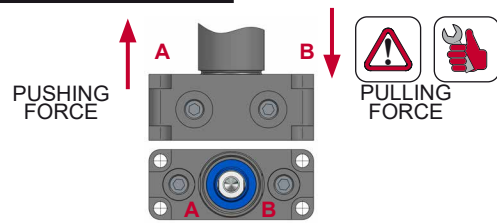
# HSCE

Hydraulic Ejector



| ORDER          | S (mm) | L1 ±0,25 (mm) | L (mm) |
|----------------|--------|---------------|--------|
| HSCE 45-45 025 | 25     | 133           | 97     |
| HSCE 45-45 050 | 50     | 183           | 122    |
| HSCE 45-45 075 | 75     | 233           | 147    |
| HSCE 45-45 100 | 100    | 283           | 172    |
| HSCE 45-45 125 | 125    | 333           | 197    |
| HSCE 45-45 150 | 150    | 383           | 222    |
| HSCE 45-45 175 | 175    | 433           | 247    |
| HSCE 45-45 200 | 200    | 483           | 272    |
| HSCE 45-45 250 | 250    | 583           | 322    |

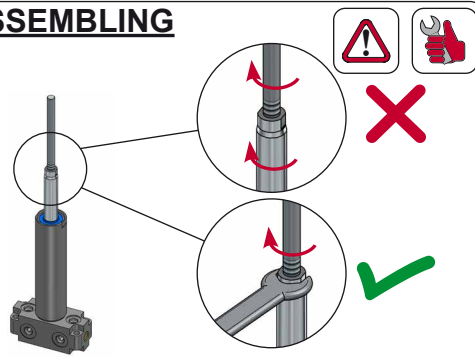
## PERFORMANCE



WARNING: fastening (A) corresponds to pushing force and fastening (B) corresponds to pulling force.

| Pmax (bar) | Pmax (psi) | Pushing Force (N) | Pulling Force (N) |
|------------|------------|-------------------|-------------------|
| 100        | 1450       | 4626              | 4626              |

## ASSEMBLING

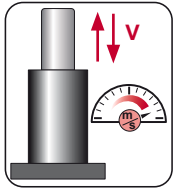


WARNING: when threading ejector rods to the HSCE hydraulic ejector, the HSCE piston rod must be well fastened as shown to prevent its rotation.

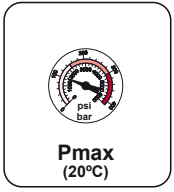
|                       |  |           |
|-----------------------|--|-----------|
|                       | ENG ORDER<br>DEU BESTELL<br>FRA COMMANDE<br>ITA ORDINE<br>ESP PEDIDO<br>POR PEDIDO |           |
| <b>HSCE 45-45</b>     |  | <b>50</b> |
| <b>HSCE 45-45 050</b> |  |           |



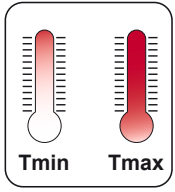
OIL



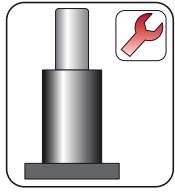
Vmax 0,5 m/s



bar 100 psi 1450



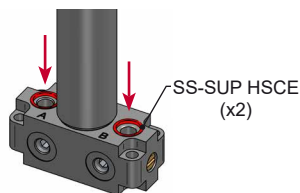
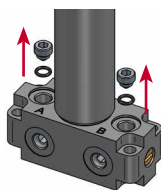
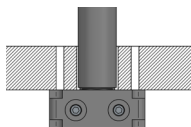
°C 0 °F 32 °C 80 °F 176



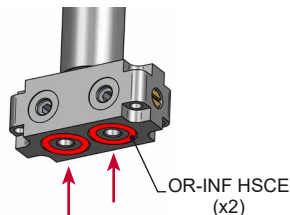
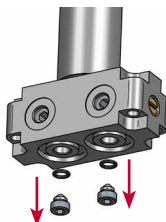
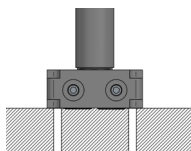
NO REPAIR

## CONNECTION

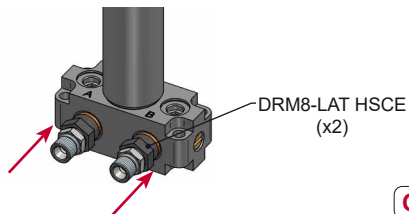
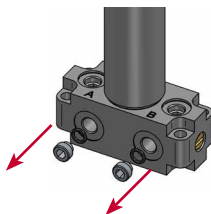
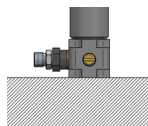
### 1 SUPERIOR


**INCLUDED**

### 2 INFERIOR


**INCLUDED**

### 3 LATERAL


**OPTIONAL**

**WARNING:** there are 3 types of connection

1. SUPERIOR. Remove the screw and the o.ring. Use the new SS-SUP HSCE to seal the HSCE to the plate.
2. INFERIOR. Remove the screw and the o.ring. Use the new OR-INF HSCE to seal the HSCE to the plate.
3. LATERAL. Remove the screw and the o.ring. No o.ring is used, just thread DRM8-LAT HSCE to the HSCE.

## HOW TO ORDER



|     |          |
|-----|----------|
| ENG | ORDER    |
| DEU | BESTELL  |
| FRA | COMMANDE |
| ITA | ORDINE   |
| ESP | PEDIDO   |
| POR | PEDIDO   |


**HSCE 15-30**
**50**
**HSCE 15-30 050**

### Options:


**3 Lateral**

**DRM8-LAT HSCE**


**WARNING:**

Due to the different types of connections, HSCE hydraulic ejector is supplied with all the sealing plugs assembled and the sealing o.rings SS-SUP HSCE and OR-INF HSCE (on separate bag fitted to the cylinder). Adapter DRM8-LAT HSCE must be ordered separately as an option.



Landalucía, 7, P.I. Júndiz  
01015 Vitoria-Gasteiz  
Tel.: +34 945 290 010  
Fax: +34 945 290 381

[azolgas@azolgas.com](mailto:azolgas@azolgas.com)  
[www.azolgas.com](http://www.azolgas.com)